

Tournament Series



fishalabama.org



Sweet Home Alabama™



GARMIN™



Contact Information:

Kay Donaldson – 256-303-7905

Kay@alabamabasstrail.org

Justin Graves – 256-309-9852

justin@alabamabasstrail.org

Chris Brown
901-493-0437



ABT 100 - LAY LAKE

Due to the ongoing threat of COVID-19, the ABT will continue to use social distancing guidelines set forth by the CDC. These guidelines will be used from the pre-tournament check-in through payout. Thank you for doing your part!

*Please follow the direction of our team as we work to keep everyone safe!

ABT 100 - LAY LAKE

ALL anglers and staff are encouraged to wear a face buff or protective mask while going through boat check and while standing at the tanks. Once you enter the stage, you may remove the buff. If you do not have a buff, the ABT 100 Team will provide you one that you can keep and use at future events.

RULES OVERVIEW

RULES

WELCOME TO LAY LAKE

- Boat Check begins at 4 a.m.
- Check-in by water at flashing lights at the dock.
- Safety First! Anytime your big motor is running, you must be wearing a CG rated PFD! Kill-switches must be tethered!
- Please follow all posted water control signs and buoys! (If you're ticketed, you are DQ)
- Blast-off at Safe Light.
- First Flight due in at 3:00 pm. This is a trailered weigh-in.

ABT 100 - LAY LAKE

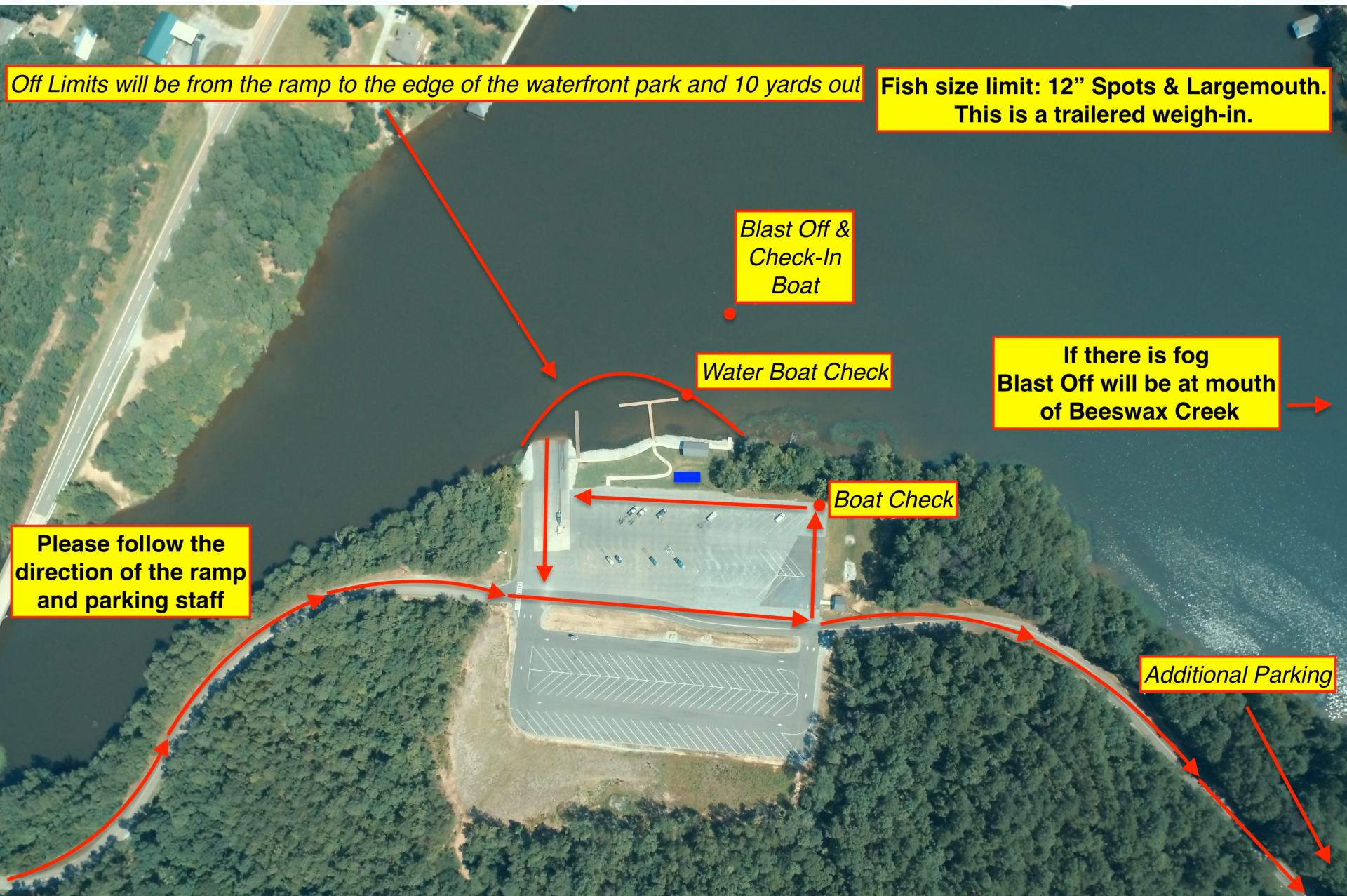
- When you arrive at Boat Check Saturday morning, the team member in the vehicle's driver seat needs to have the text message with their team's boat number open on their phone.
- The vehicle's driver will be given a key fob at Boat Check. The key fob has the team's boat number.
- DO NOT LOSE YOUR KEY FOB!!! You must return the key fob at weigh-in in order to weigh your team's fish.

Fish Size Limit

Largemouth 12-inches

Spotted Bass 12-inches

LOGISTICS



Off Limits will be from the ramp to the edge of the waterfront park and 10 yards out

Fish size limit: 12" Spots & Largemouth.
This is a trailered weigh-in.

*Blast Off &
Check-In
Boat*

Water Boat Check

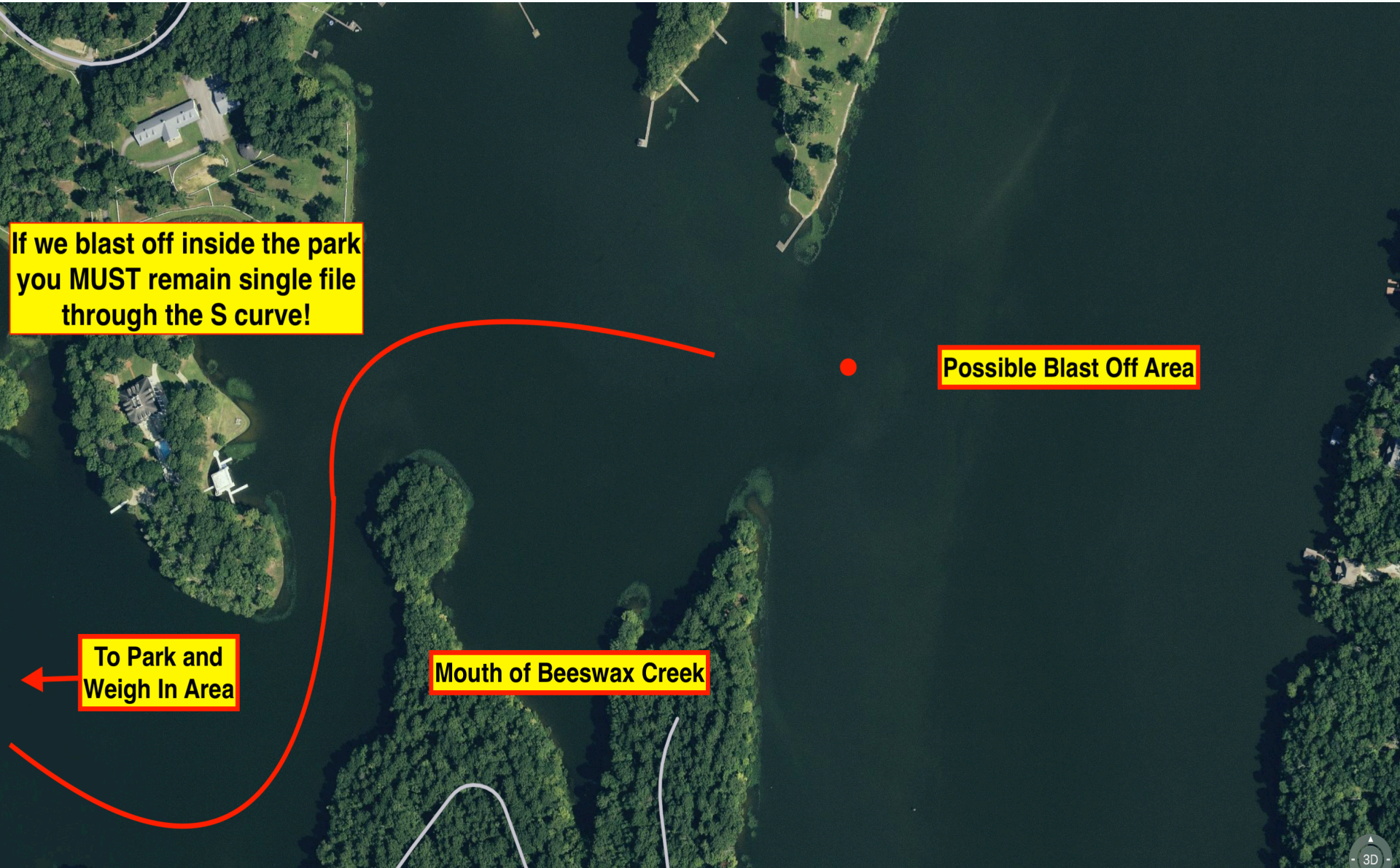
If there is fog
Blast Off will be at mouth
of Beeswax Creek

Boat Check

**Please follow the
direction of the ramp
and parking staff**

Additional Parking

LOGISTICS



If we blast off inside the park
you **MUST** remain single file
through the S curve!

Possible Blast Off Area

To Park and
Weigh In Area

Mouth of Beeswax Creek

IF COMING BY WATER

See Daniel with the ABT
Team with your boat
number before you leave!

Tournament Director Justin Graves

256-309-9852

- In an emergency situation call 911, then only when safe to do so call either myself or Kay Donaldson 256-303-7905
- After weigh-in starts, you will have to contact Kay!

