

Tournament Series



fishalabama.org



Sweet Home Alabama™



Chris Brown

901-493-0437



RULES OVERVIEW

RULES

Welcome to Pickwick Lake!

- Boat Check will begin at 4:00 am!!!
- Check in by water @ flashing lights
- Safety First! Anytime your big motor is running you must be wearing a CG rated PFD! When big motor is running and in gear, kill-switch tethers are to be worn!
- Please follow all posted water control signs and buoys! (If your ticketed = DQ)
- Blast off at Safe Light (approx 6:00)
- First Flight due in at 2:30pm

OFF LIMITS

Off-limits Areas: 100 yards of the ramp and where the ABT Officials release fish. Locking through to Wilson Lake is prohibited. ABT Anglers will be allowed to fish in both TN and MS waters with the understanding that anglers will only be allowed to travel to the midway point of the Tenn/Tom (DO NOT Pass the HWY 25 Bridge!), but will not be allowed to travel into the Bay Springs Lake Area of Mississippi.

WILSON DAM

If fishing within 800 feet of Wilson Dam, anglers must wear a Coast Guard approved PFD at all times.

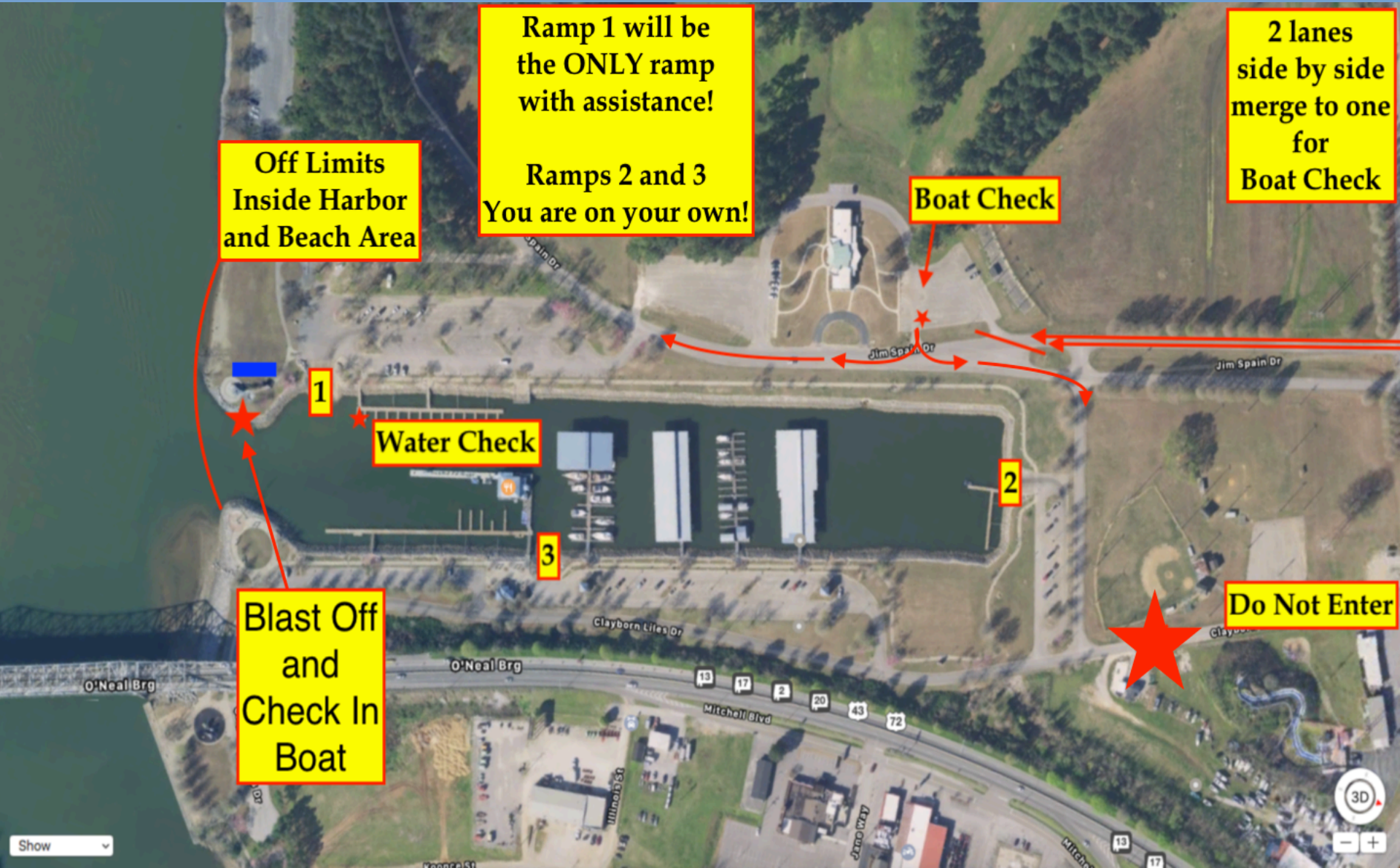
Fish Size Minimum Length

Largemouth 15inches

Smallmouth 15inches

Spotted Bass 12inches

LOGISTICS



Off Limits
Inside Harbor
and Beach Area

Ramp 1 will be
the ONLY ramp
with assistance!

Ramps 2 and 3
You are on your own!

2 lanes
side by side
merge to one
for
Boat Check

Boat Check

Water Check

Do Not Enter

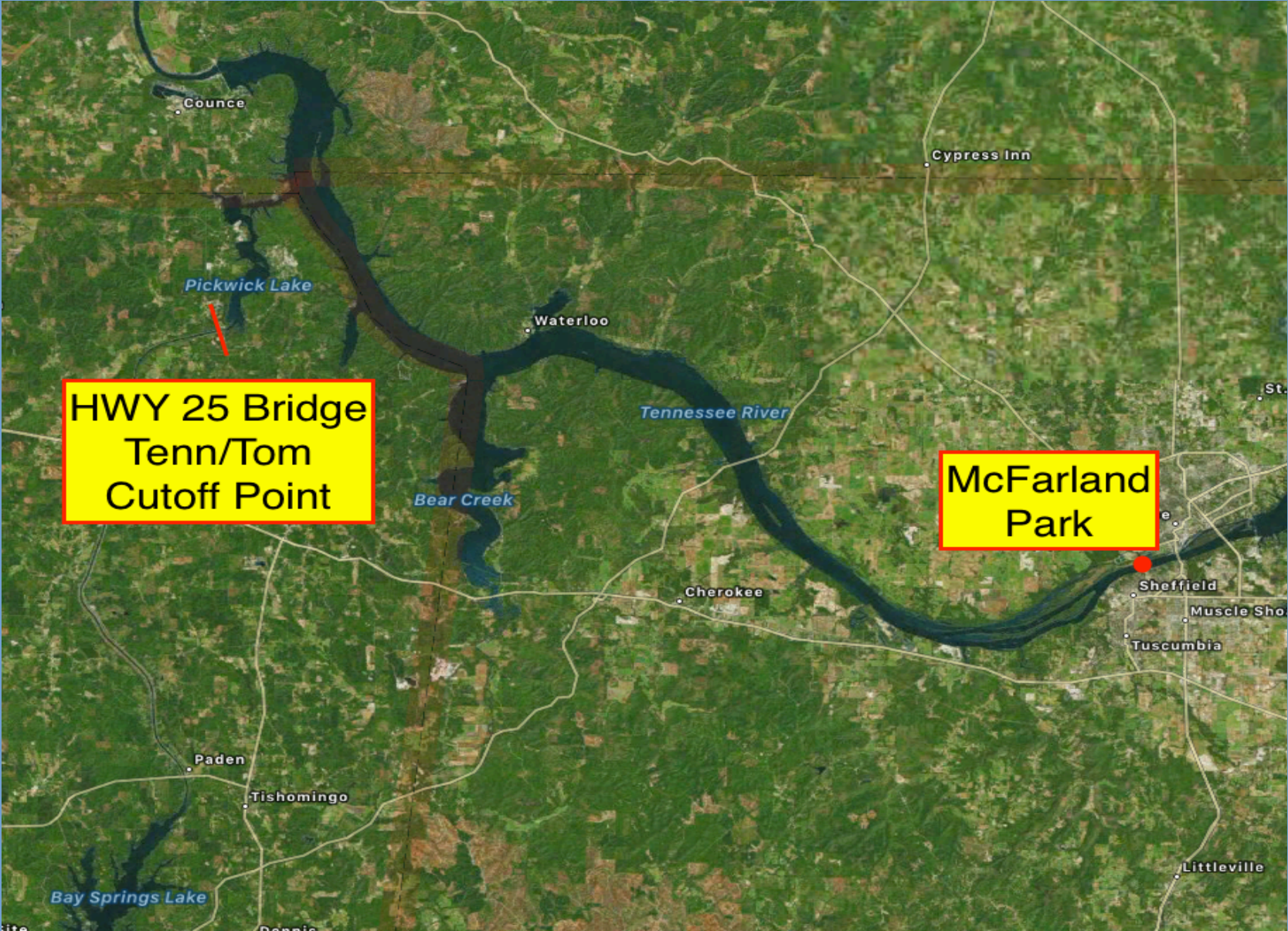
Blast Off
and
Check In
Boat

1

2

3

OVERHEAD VIEW



HWY 25 BRIDGE



**Do NOT Cross
Under the HWY 25
Bridge**

Tournament Director

Scott Dobbins

256-309-9852

- In an emergency situation call 911, then only when safe to do so call either myself or Kay Donaldson 256-303-7905
- After weigh in starts, you will have to call Kay!

If you are coming by water

Contact Scott via text
message by

Friday 6/3/22 @ 5:00pm

256-309-9852



Tournament Series



fishalabama.org



Sweet Home Alabama™



GARMIN™



Alabama Power Foundation

